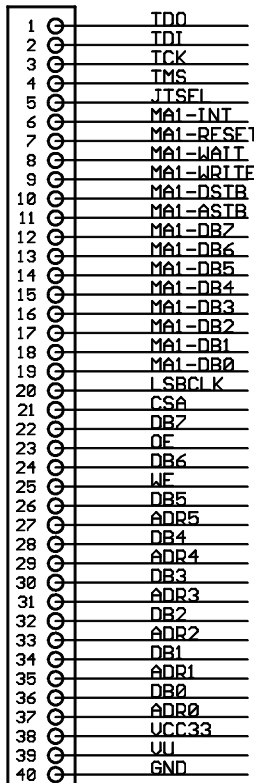
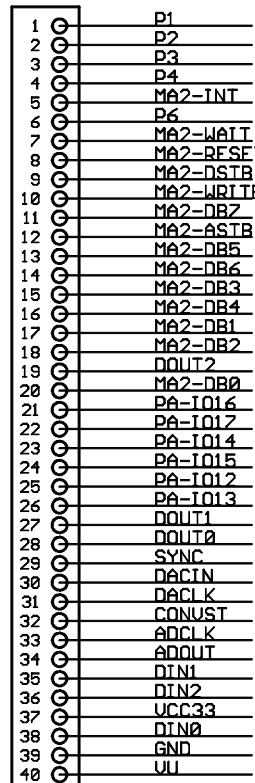


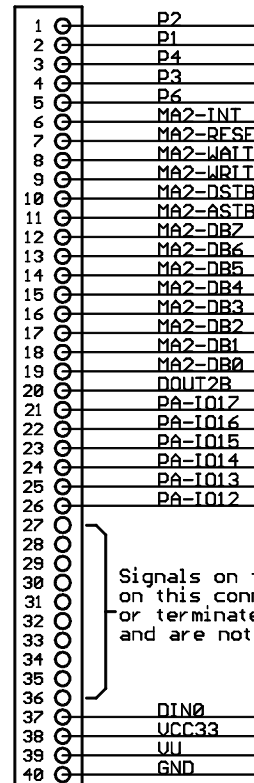
J1



J3

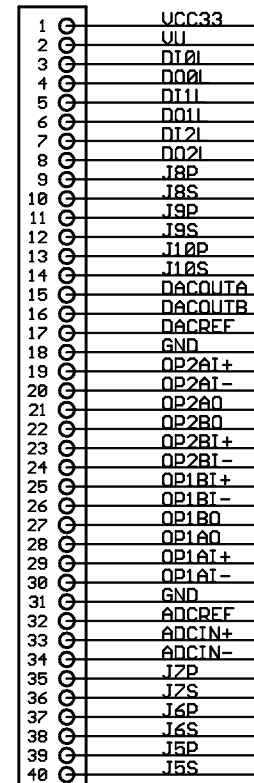


J2

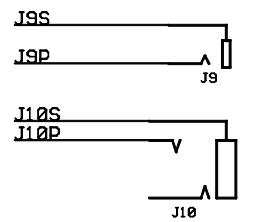
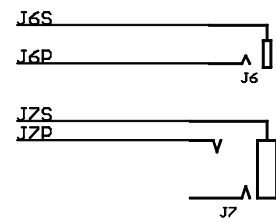
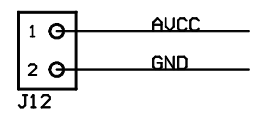
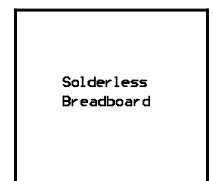
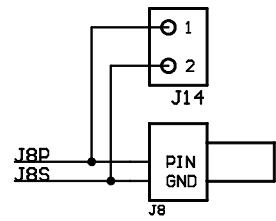
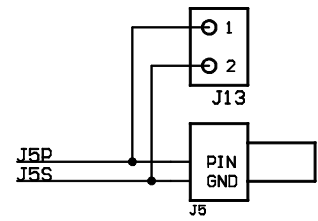


J4

Signals on these pin positions on this connector originate or terminate on this board and are not passed through

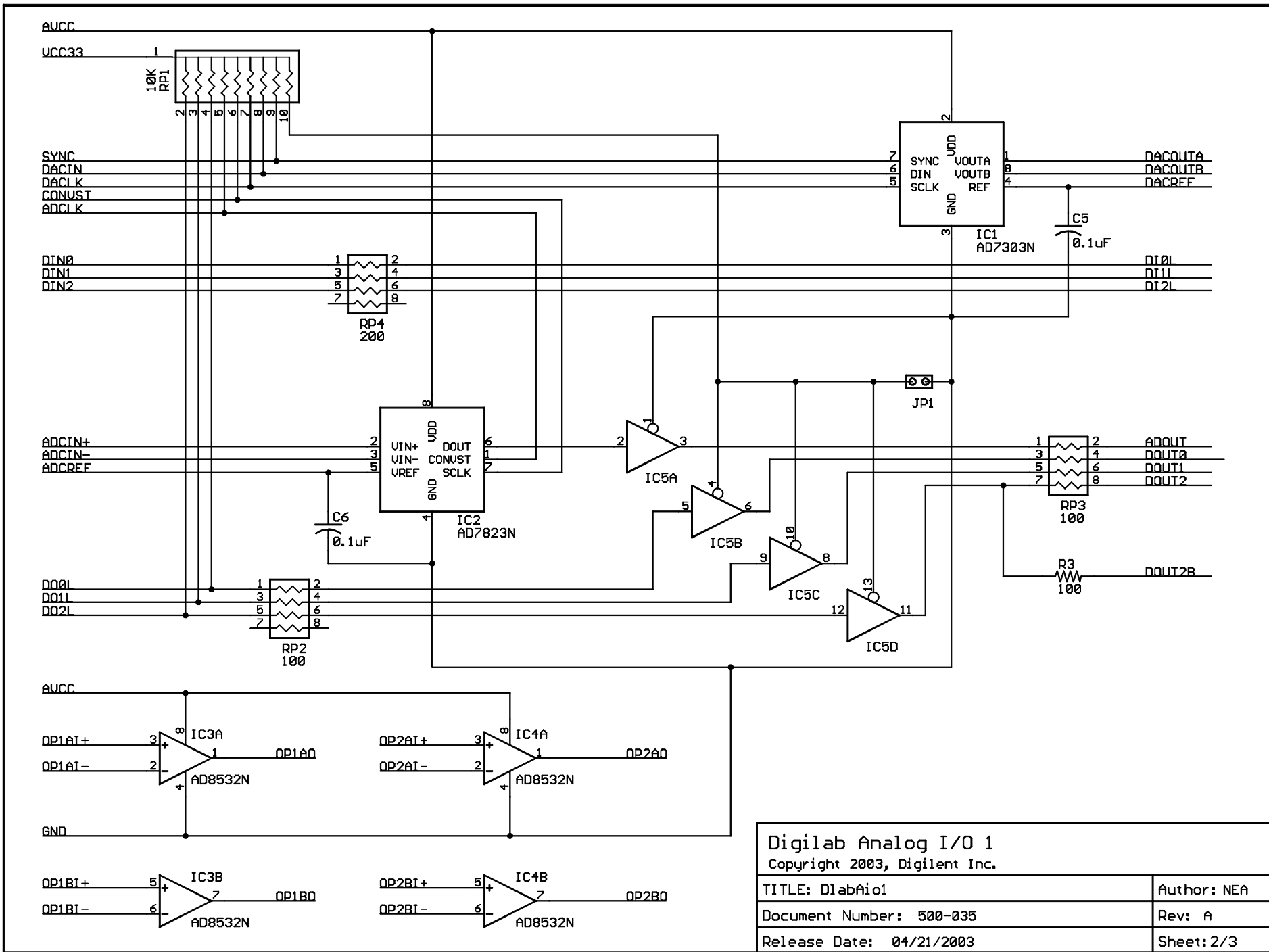


J11

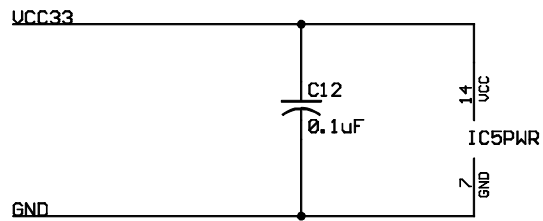
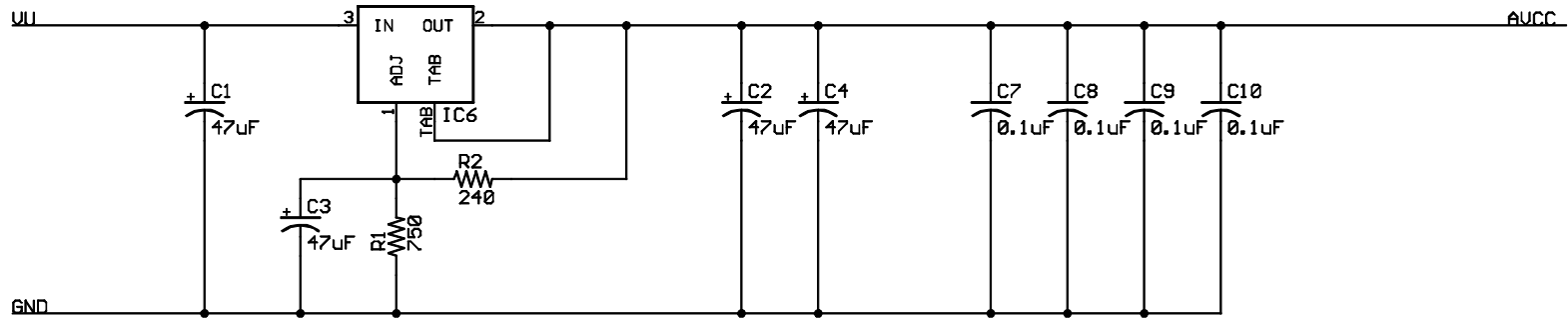


Digilab Analog I/O 1  
Copyright 2003, Digilent Inc.

|                          |             |
|--------------------------|-------------|
| TITLE: DlabAio1          | Author: NEA |
| Document Number: 500-035 | Rev: A      |
| Release Date: 04/21/2003 | Sheet:1/3   |



|  |             |
|--|-------------|
| <b>Digilab Analog I/O 1</b><br>Copyright 2003, Digilent Inc. |             |
| TITLE: DlabAio1  | Author: NEA |
| Document Number: 500-035                                     | Rev: A      |
| Release Date: 04/21/2003                                     | Sheet: 2/3  |



|                               |             |
|-------------------------------|-------------|
| Digilab Analog I/O 1          |             |
| Copyright 2003, Digilent Inc. |             |
| TITLE: DlabAio1               | Author: NEA |
| Document Number: 500-035      | Rev: A      |
| Release Date: 04/21/2003      | Sheet: 3/3  |